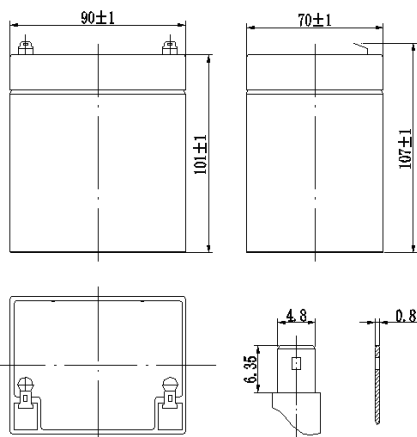


SB5-12 (12V5.5Ah/20hr)



General Series

General Series Valve Regulated Lead Acid batteries are designed with AGM (Absorbent Glass Mat) technology, high performance plates and electrolyte to gain extra power output for common power backup system applications widely used in the field of UPS, Emergency Lighting System.

Application

- Alarm System
- Cable Television
- Power tools
- Emergency Power System
- Security System
- Solar
- Medical Equipment
- UPS
- Communication Equipment
- Control Equipment
- Toys

General Features

- Sealed and maintenance free operation.
- Non-Spillable construction design.
- ABS containers and covers optional.
- Safety valve installation for explosion proof.
- High quality and high reliability.
- Exceptional deep discharge recovery performance.
- Low self discharge characteristic.
- Flexibility design for multiple install positions.

CONSTRUCTION

Component	Positive plate	Negative plate	Container	Cover	Safety valve	Terminal	Separator	Electrolyte
Raw material	Lead dioxide	Lead	ABS	ABS	Rubber	Copper	Fiberglass	Sulfuric acid

TECHNOLOGY PARAMETER

Battery model	SB5-12			
Designed Floating Life	3~5 Years			
Capacity (25℃)	20hR(0.275A, 10.5V)	10hR(0.52A, 10.5V)	5hR(0.96A, 10.5V)	1hR(3.70A, 9.60V)
	5.5Ah	5.2Ah	4.8Ah	3.70Ah
Dimensions	Length	Width	Height	Total Height
	90±1mm	70±1mm	101±1mm	107±1mm
Approx. weight (±5%)	1.58Kg (3.51lbs)			
Internal resistance	Full charged at 25℃: Approx. 28mOhms			
Self discharge	3% of capacity declined per month at 25℃ (average)			
Capacity Affected by Temp.(20HR)	40℃	25℃	0℃	-15℃
	102%	100%	85%	65%
Charge Voltage (25℃)	Cycle use		Float use	
	14.4-15.0V(-15mV/℃), max. Current: 1.65A		13.5-13.8V(-10mV/℃)	

SB5-12 (12V5.5Ah/20hr)

Constant current discharge ratings-amperes at 25°C

End Point Volts/Cell	5min	10min	15min	30min	1h	3h	5h	10h	20h
1.60V	21.230	14.960	11.440	6.325	3.707	1.562	0.985	0.556	0.285
1.65V	20.405	14.410	11.110	6.105	3.531	1.507	0.974	0.545	0.282
1.70V	19.195	13.860	10.835	5.885	3.361	1.458	0.957	0.534	0.279
1.75V	18.040	13.310	10.395	5.610	3.190	1.397	0.946	0.523	0.275
1.80V	16.830	12.705	10.065	5.390	3.124	1.331	0.930	0.512	0.270

Constant power discharge ratings-watts at 25°C

End Point Volts/Cell	5min	10min	15min	30min	1h	3h	5h	10h	20h
1.60V	39.270	27.665	21.285	11.825	6.985	2.948	1.870	1.067	0.545
1.65V	37.510	26.510	20.515	11.330	6.600	2.838	1.837	1.034	0.539
1.70V	35.145	25.355	19.910	10.835	6.270	2.728	1.799	1.007	0.528
1.75V	32.835	24.200	19.030	10.340	5.885	2.596	1.766	0.979	0.523
1.80V	30.305	22.935	18.260	9.790	5.720	2.453	1.716	0.946	0.506

